



HORT.BOT.REG.

SICALCVTT.123

À Messieurs les membres de
la Société du Muséum d'Histoire
naturelle de Strasbourg

de la part

de M^r. Mougé et
W. S. Schimper.

116.4

STIRPES CRYPTOGRAMÆ

VOGESO - RHENANÆ;

QUAS

IN RHENI SUPERIORIS INFERIORISQUE, NEC NON
VOGESORUM PRÆFECTURIS

COLLEGERCHT

J. B. MODGEOT, Bruyeriensis, Med. Doct., C. NESTLER, Argentinensis, Facult.
Med. Aident. Botao. Prof^t, et W. P. SCHWERTNER, Scienr. Doct.
Musci ad Hist or. natur. Acad em. Argem. Conservator.

->— *Dens* 0. M. et uaturs iiiiil frustra creaveril.
Posteris tamed tot inventuros fore utiiliates ex nuisris
auguror, qui ex reiiquis vegeiabilibus.—

Lint) ; Cût honof Amtrn. Acad.; mm. III, p .i{i .

FASCICULUS XIV.



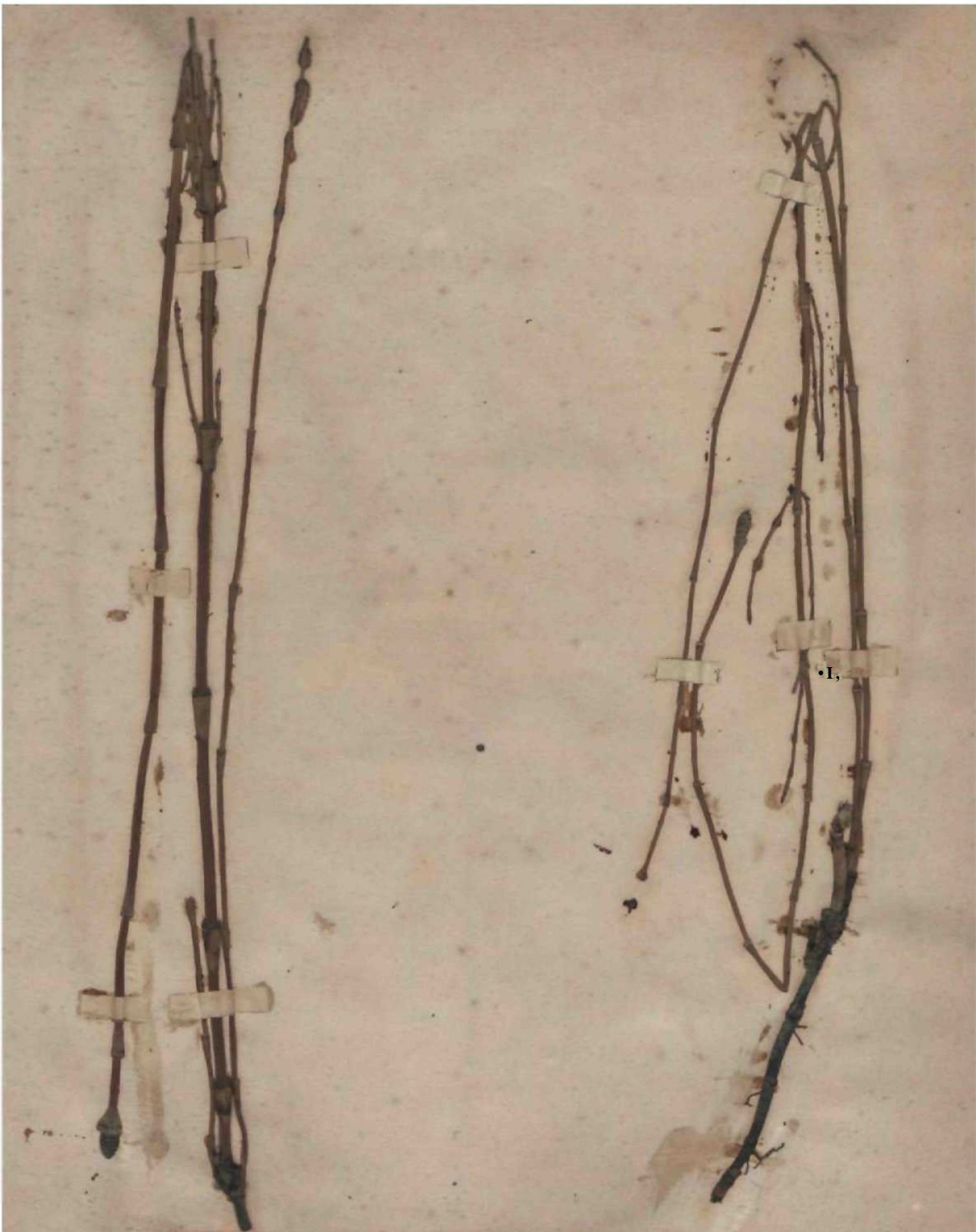
BRUYERH Vogesorum. 1854.





INDEX SISTENS SPECIERIJM NOMIHA FASCICULI XIV.

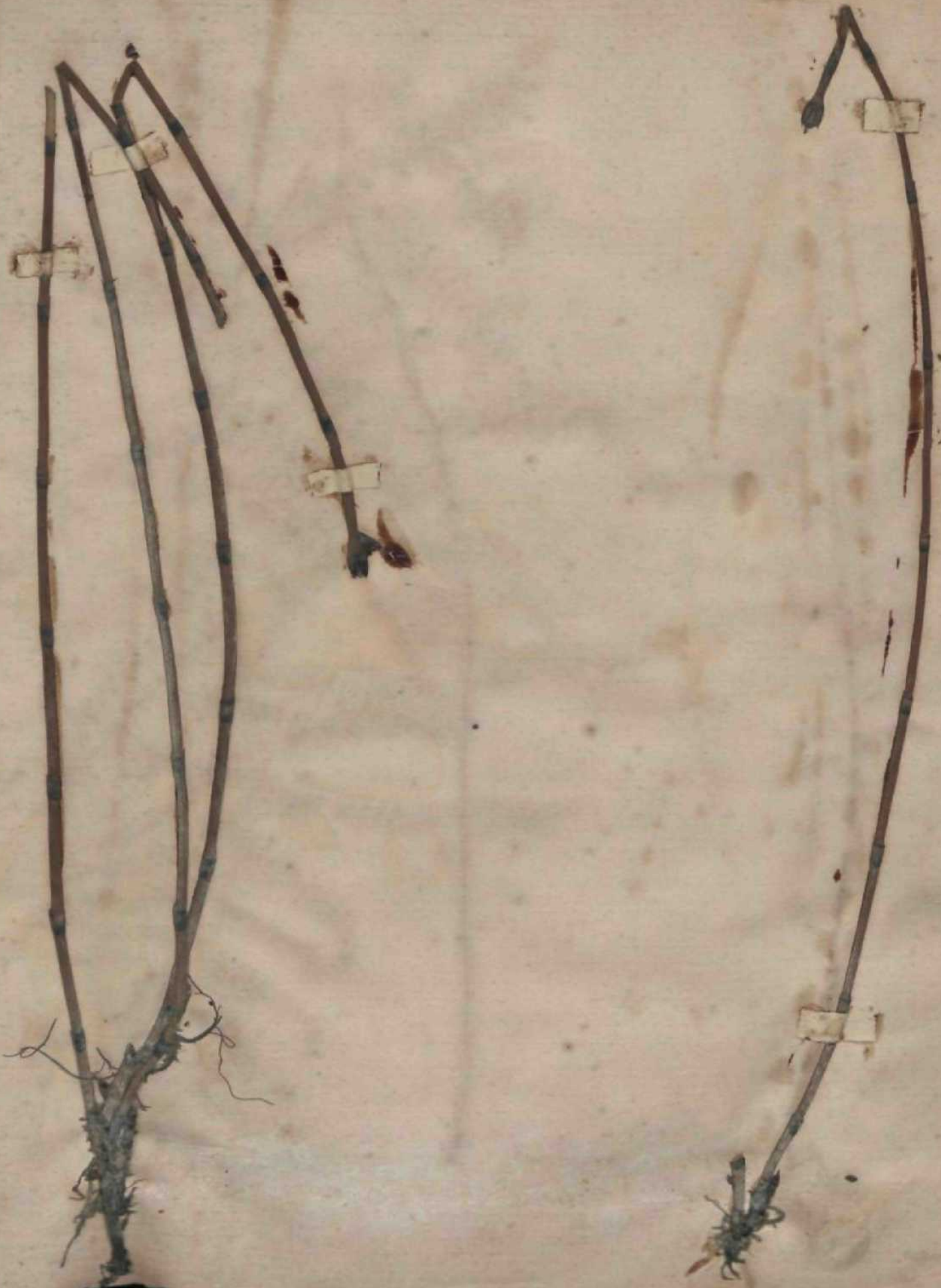
Achnanthes minutissima Kutz.	N* 1595.	Hypnum revolvens SIP.	1519.
Arthonia Inrida Ackar.	1325.	Jungermannia rubella Nees.	1525.
Aspidium (ilixmas v, degencrans.	1505.	Lecason sophodea si. ecrust. Nyt.	1531.
Barlula paladosa Schwg.	1311.	Lecidea disciformis st. ecrust. i V/.	1328.
Urbicula montioidea Oirda.	1550.	Lecidea mebsau Nyt.	1329.
Biyam capQian t. PerebdiL	15U.	Lecidea ostroata Schcer.	1326.
Bubodme selifgera A gar,	1357.	Lecidea pfl;tsema st. tvrnst. Nt/t.	1527.
Caliciuoi dtsHenudalum Fries.	1353.	Lecidea veroalis v. anomala Ni.	155U.
Calofbrix Bn-ltiosuni hiiti.	1369.	Leptothrix fov^olarum Mont.	157 i.
CakKhris radios Ai <;	1570.	Leptomitna laotens Kvts.	1395.
OrnlInris Aims hiitz.	1394.	Lo>\\nt:oh'a Bookeriana Sees.	1324.
Chflntmsi^ ch djhn fnw-	ISSS.	MriiJion drcularc Ag,	1399.
Chaalransia pTODKa ffite.	1536.	Micrasterias oscilans Raffs.	1588.
Chara hispid a (.tnit.	1533.	Nostoc Demangeoaii de lir?h.	1575.
Chara slrigosn A. fir.	1332.	Sostuc foliaceuic Ag.	1572.
Closterium did]...toenm Cord.	1391.	Odonlidiutn meflodoD In'ttz.	1598.
Closterium diilymotociim v. Baillyan.	17,11^.	Oedogonhun ultieue hi'itz.	1358.
(lollenia sootiaam Ack.	1552.	Orthotricfanm faatigiatnni Ur.	1515.
Cosmariansi Meneghini de lireb.		Orthotrichtn. leapTlmm Ur.	1512.
Cosmariam tetrao^hthalthmani h'titz.	138S.	Oscillaria lininsa v. aflochroa Kutz.	1578.
Cytispora in rpbil *-(-niu Fries.	15W).	Osciiibri;i lirooaj T. dajj bw Kutz.	1579.
Cromrliliiiti .1- t.'i.i<j.rim Fries.	1511.	Osdllaria UaxMa T. uncinatI Hits.	1377.
Dirranam palusir^ Bt id.	15M.	OscitJuia tett uis v. formo<t h ut:.	13fi.
Dicranura subul.ttum Hniir.	1509.	I^itnuiglofa Itn'biwvni ki'ttz.	r,St.
Diptodta pp^iulosa Léece 1//.	1556.	TViiiiiu ISn l.issoi Ralfs-	1390.
Uiplodb vulgaris Léece-Hl.	1557.	Penium digitus t.hre*o.	1389.
Dotbidn hucalpla Wall	[558,	Pezim smangditu Lrrritt.	1345.
Uoiliidoa [Vtentillae Fries.	1559.	Phascum cusj idat. v. piliferum Br. et S.	1504.
Drapamaldia acata Kutz.	1559.		15*1.
Drapanmldia palbella Kutz.	1560.	Vhaaa allricans Hob.	1542.
Equisetum elonpuium Yiltid.	1301.	Phoma subordinaria Desmaz.	1575.
Equisetum trachyodon A. Dr.	1502.	Phormidiuin p^inno^iini hutz.	1575.
Euactis cakivora -1, Ur.	1506.	Phy iomyces nitens li'' C	1351.
Euastrum crassum Kutz.	158f5.	Podisonia fusruni Ituby.	1547.
Euastrum insij^ite Ban.	1587.	Rhynclosiejnuni<'onf<Tli.Jin Schimp.	1516.
Exosporiom Lilacis Dem.	154-4.	Rh> in IH<ip]num dantaitm Schtmp.	1315.
Praguaria capucina KuU.	15KS.	PIIISH: hostegiu tnrobm&kA Skimp.	1517.
Krafirjiri virescens UalFs.	155)7.	Scytonetna nalans dt Ktrh.	1371.
Gloeocapsa Peniocyctis hiits.	1582.	Sii'iisijllioii Iluitii'llr't sir ih'fi.	1568.
GUEosporium Uoogeotii Don.	15-iH.	Spbaeria Isterilia Fries.	1354.
(rijijinj.i torouala Greo,	15(18.	Sphaerta sioopica Fries.	1555.
Grhcmia sncinata A ««//".	1507.	Sfilha^num Uougeotii Sckitnp.	1306.
fliirKintiJiiiri pecUoale hiitz.	1-i<Ki.	Splii^iuiin BfiOfttTOSnliiai Lesq.	1305.
Hyalotheca muscoaa Ehreab.	1583.	Spirogyya adbata Kuti.	1554.
Bydrocoleura calcitegaii Al. Ur.	1367.	Sporonema Btrobilina Dem.	1345.
Hydrurns pentcillaios Kutz.	1580.	Slims Berkeleyana Dur. H Lév.	1546.
Ilyjmuin adoDcam Bedw.	1331.	StigeoclonioiD tense hiitz.	1561.
Ilypntmi Baitani v. UiU-mmnDr.etSch,	1530.	Vloilnix EBqnalis Ai;^.	1565.
BypDum iinp'ini'is Hrdic.	1518.	LJutliris monfliformis huis.	1564.
Hypfinm praieoae Koch.	1522.	L'loifarix paUidevire&s kits.	15&.
		tlobris iciub Kutz.	1389



1301. *Etjuiseium elongatum* Witld. ex ft a-it rhein. Flora p. 31.
In abuU/nit ad r.jp!s [(ho)i] Vannhfin K;igu Ducol Ba^osis, mmsfc misji S,raj. x^f, April.

1302. *Equisetium Lraclyorton* Al Braun in D&llrkein. Flora p. 32.

In \its ad ripas Hlifiii circa Carlthhr oWrrvnvii amic. Dull. Maio.



1505. *Aspidium Filix mas var. degenerans Doeli in Lilt*

Ad parities iutgerino agrorum, versus spiciirUuii'iii nmnlis Avian Bmreii.
Per scni seciilitii siugufis annis sestatu el Juluiuno li:it»: forinam , pinaulis cutislnnior erosis ,
promiscue cum furjna Dormali ubsenraTimus.

X.



*

A

1504. *Pfmscum cuapulatum* var. **pfiferam** Br, et Sckimp, Bry. Etit. tab. 4.

Phaseum piliferuin Schreb.

ID muñis 3EIJosB el timun sjhanan, Vere.

1305. *Sphagnum squarrosum* Lesquer. in Litt.
In imfaciis let l*onit M. Jiirn usqutdo sterile legit am. *Lesquerens.*






1306. *Sphagnum* Mongeolii *Sckimp.* *Monogr. ined. de Sphag*
In torfaceis ad oras sylvae Byrmoni prope Dniyriimi nihiluc sterile.

De cum thecis legit amicus Talsqueloy Augusto 1855 in torfaceis
Tuz.



1308. *Crimmia lorquala* Grev. *Scot. crypL Fior. vol A tab. 199.*
Zygodon torquatus Liebm. ex Mult. *Syn. mus. Frond. I. p. 682.*
ID rupios graoilosj* Vogsorum, pr[^]sertim in moniii HoUnck, sed UMtaelo sine fructu.





t509. *Dikranum subulata* m *iledw.* — *Br. et ScL Bry. ear. tab. 00-*
AJ Utera **fiaram** cavarum in manic *llohneck. a\i\j\<att* Vogesurum. .Cslale.

1010. Dicranuui pnusre Urid. — Br. et Schimp. Bry. Eur. tab- 79.

In ptludijflis torfuteij<i(fe II. lufi el Vo^csoruni. JEslalc.



1511. *Barbula paludosa* Sch**gr — *Br. f. Sckimp. Bry. Enrtab. \U*
I. udU et Iritis M. lw cirt, S *sainte-Croix, legit am. Lesquereux. Estate.*



1312. *Orthotrichum teallum* Bntch in lind* Dry. imiv, — Br. et Sch.
Ury, Eur. tab. 212.

Ad arbores ciimpcslrcs pr^>rtmiB rojinlf.is. Ma to iniftoijuc Juali.

#

1515. *Ortoirichum fasLiyiilum* *Bruch in Brid. Bry. unto, Br.*
et Sch. Bry. Eur. tab. 210.

Ad arbores *campestres*, *praesertim yd Iruntos Populi et Jugland* ⁵ - *A n rili* } *ilio lle Maii* .

1514. *Bryuna capillare* var. *Ferchellii* fir. et *Scliimp. Bry, Eur. tab. 369.*

Brynm Ferchellii *Funk. — Brid.*

Ad hpii!(?j *Leyrautisonnc (Cheuteronj II. Jura legil Ltqttereux, junio.*





1315. *Khynchostegium demissum* Schimp. Sfy. Euro. lab. 507.
Hypnum deniisauni Wik. *Hypnum ScLimperi* Bruch in Ill.
Ad lapides quaruosos ijlvortini circa OffictiUr Atwt. infer H>™c



1316^hynchosi<?gtum confertum *Schimp*, *Dry. eur. tab. 510*
Hypnuni confertum *Dicks.*
Ad saia , muros, arbor um* radices in umbrasis Vogemram. Uyeme ae primo vere.

1317. *Rhynchostegium rotundifolium* Schimp. Dry. Enr. tab. 515.

Rhynchostegium rotundifolium Schimp.

AJ tap'ide3 ia ticipib^S circa Arljenloralt'in «L nd rujw* prope Sainlr-MaHt-aux-JUhttJt icgU am. Ctuyan.



1518. *Hypnum imponens* Hedw. *Bru. et Schimp. Bry. Ear, lab. 597.*

Ail terrain liEia- $\{$ uo pulridj Sylvantiti umbrusnru $\}$ in Vog \wedge an inferiore
prope LisreibaL rtt $\}$ n nrcen rvittosui ilamttin. U \wedge uedo sterile.

Exemplaria cum ihecis « America iseptetrionaJi ab amico Letquerazt accEJ]imis.





1319. *Hypnum revolvens* Sw. — Br. et Schimp. Bry. Eur. tab. 601.
In torfaceis M. Jura legit am. Lesqueureux, nos in Vogesorum paludosis. Aestate.



io20. *Hypnum iluianum* var. *falcaluro* Br. et Sckimp. Bry. £«r. iab. 002.

Ubique in prwuplis Vosesofuni «] «amri|hK3 ; nsquwlo steri.e.

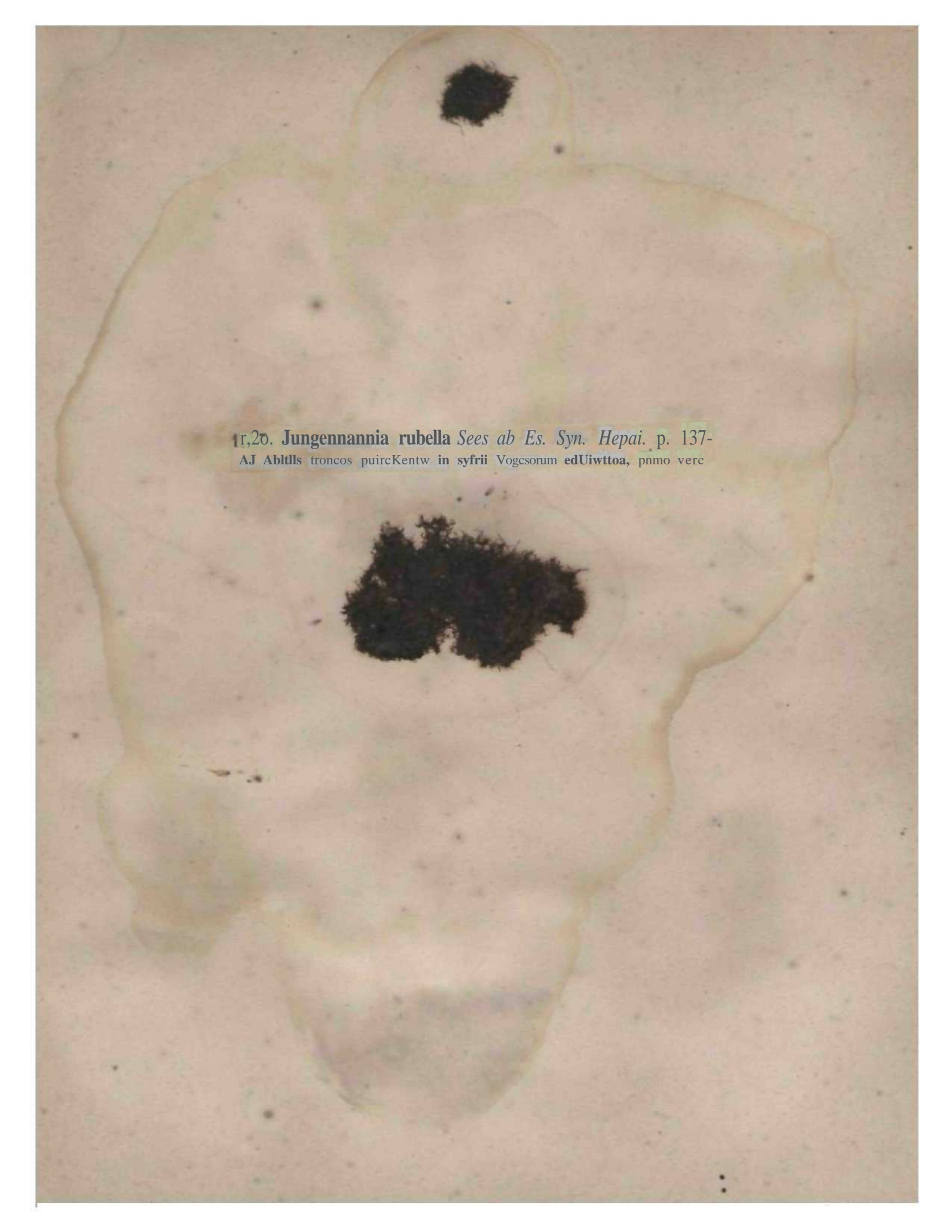
1521. Hypnum *uhii* Hedr. — Br, et Schmp. BrynL Eur. tab. 501.

In pilis tuii uVti! ul^:irii tq vnge&is, se'l tauHim due capsula.

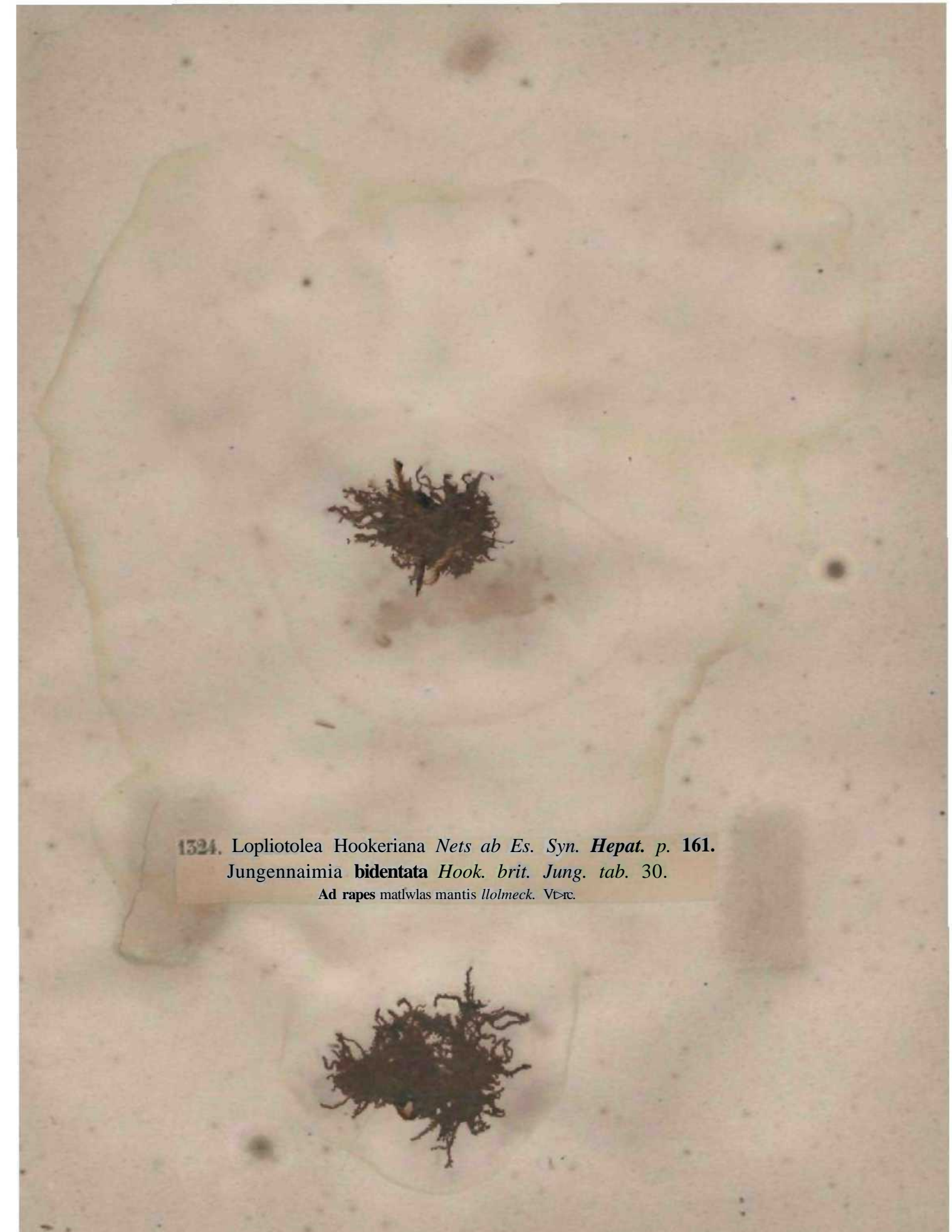


1322. Hypouin **pratense** Koch, — *Br. et Schimp, Bryot. Eur. tab. fill.*
In praiia paluilpsis circn Kaytrtonitrn el flrvytrw, Estate.





1r,2v. *Jungennannia rubella* Sees ab Es. Syn. *Hepai*. p. 137-
AJ Abltlls troncos puircKentw in syfrii Vogcsorum edUiwtoa, pnmo verc



1324. *Lopliotolea Hookeriana* *Nets ab Es. Syn. Hepat. p. 161.*
Jungennaimia bidentata *Hook. brit. Jung. tab. 30.*
Ad rapes matlwlas mantis llolmeck. V17c.



1325. *Arthonia lurida* Ach. *Syn. Lich.* p. 7.
Ad truncos praesertim cortice denudatos jacentesque Abietis in Vogesorum sylvis.
Spore ovoides uniseptate, longit. 0,010—14 millim., crasis. 0,004—3 millim.
variat colore apotheciorum : D. Nylander exemplaria apotheciis pallide brunneis vel
testaceis (quae in typo fusco-brunnea vel nigricantia sunt) varietatem helvolam nominavit.

ISBB. Lecidea osirealu AWirtreer £7iwm. tick. eurof>. p. W<
Lecidea sc;ilaris tçft. —**Psora osireato** Uoffm,
Ad corticem %n<>miinc Abietisiu Voj.vic.imii tylvia cdliioribm; jporta ooe rile ewtaw visa.

1327. *Lecidea purasema*, sicuti e crust. ideo *Nyland. in Lilt.*
Ad Iromxrt Abletis eniortuos at' ai-ro imlnruius, in *Vogesorum sylvis.*
Spoftu sirnjhlicis tij.ilina' vel *lutescentes.*



ot

1328. Lecidea discifonius, smtu ccrusiaceo *Nyland. in Litt.*

Lecidea parajrny twr. snprnphilm *Ach*, J>KI parle, HalilJiL cuni prajtcderie in trunciu abitgnis,

Spora fuseo-mgriramcs tllH[»soiilf?,Tr uniseptata.

1329- *Lecidea melsruei* Nyland. *Animad. Lich. Scand. in Dot.,*
nati. 1853, p. 182.

BiMori milhina tar. rudcla *Friet Summ. Vet., Scand., p.tU.* la Abte»umtruamaridis ID vogefioruih

*ylvii eJiioribwj. T hall us e {jraulis nigris formalus; ajsotlitcia con vex j inius

concolon; ipora dilute JI,va. ibaifomMillipMhtaB 1 - 3 - wpiias, loopl. 0,(14—22 millim. ;

¹⁴ 0,003^6. Tbedutu versus lurom tonspectura caeruleascens.

¹⁴ i omni L. milliard disUL bypolhecio alerrimo, ei Hyl. (. c

1530. Lecidea (Biatora) VerUalis v_ anoniaJa Wand, in LitU
 Biatora anomala Fries Lich. succ. ex . B, 3S0 * Ad lignu]l jj, ^, (,,,,,, putl-M0C11S sylvorum
 in Vogeso. Ex sententia cd. D''' Nylandtr hie Lichen
 mera variela potjmorptia oLoniva Diaiorai vernalis Fries.



1351, *Lecanora soplodes* sUitu ecrusiaceo, *ex. Nyland. in Litt-*

^{La} *Vogcesorum iruncis abii^nis cmoriuis iuduraisijue sylvrarum.*

^Sp^j; *fusco-nigricanles ellipsotJp.L uiisfptatse-*

Oe Lecaora sopLodo r«r, p_{YH}na fesc. IX, n' &39 eel. \$yte*der not ctocuil buoc liehenem

^{ai*} ^{LeCi}<leam Lightfoolii anelttrum Schicreriquo perliacro

(Md Don ceL fW_M qui cum aj Biaioram rivulosara 6. reilitj.



1332. Collema (Leplogium) scoiinuin Ach. Syn. Lick. p. 525.
Ad nwscoi iu WxIs Vogewrum j el llagni EJucaius BaiJensis, ubi tegi! ami. tort 7^{wackh.}
Sporx ovoijesc pluriloculares.
Collema ~~pubinaatum~~ pubinaatum pertinet.

1335. *Gilkinia disseminatum* Fries *Lich. reform*, p. *51)7.

(*Cai. microcephalum* Fr. L. S. «««. II° 17 non difTert KB fitVunrfer (n Litt.)

Nil eOfiCNi l'ini , sal fniqiens circa Luiciiam ubi **Ic-pit** cL communicavil am. *Xylan/ier*.

SpOni! **dilute nigratoults** siniplif.cs oblnngx.

lofotole D^{re} *Sytander* nosimtu Calirium slllbein, **Slirp.** crypt. Fas. Xlt, u° 1162, cst 'sua

Qmiooybc hyalinella, sporis triplu miiiorilnij ilivtrsa a Coniocybc pallida.

1554, Sphaeria later ilia *Fries Syst. myc 2 p. 358.*

Ńu;ilim Agarico litjiiiosn iq yogesn dbservnvitas,
ac abundanter legit [in](#) [compositis](#) [et](#) [in](#) [lignis](#)





L35B. *Sphaeria siroopica* *Fries EL Fung. 2. p. 81-*
Ad sarmenta *Hederæ* apud nos; Dr *Guépin* circa
Andegavum CI am. *Roussel* Meloduni.

UB& *Diplodia pustulosa* Uveill *Ann. M. nat.* 3* *ser.* *vol.* V. *p.* 291.
Ad *erlicin* *Tilise* *europæa*.

1557. *Diplodia vulgaris* *Uveit*L *Ann. sc. nai.* 3* *sfr.* vol V, p. 291.

Ad Tiliam europ[^]ant cresril, at cim[tbria bic repouila collegit rever. dt *Lacro**M.

1538. *ItohiJea insculpia Waler. Ffar. crypl. germ. 3. p. &*•*

Ad aansienU Vitatba l.tuum legiuiH n aiuim* *Gmipm* •kondHMr * & ^{caules}

Cyiiandii salivi \a hortulo pruprio iM iobservavit.




1559. *Dothidea potentillae* Fries syst. mycol 2/>.

563.


Stigmatæa potentillæ [obgeog. Oleni] Fries Summ. vegett. scand., P. *22. communicavit
 Ad folia vivo Potentillæ AUSLFUKU autumnno, ohsemvimus d c«JnpUria
 am. Bouteille. Ad g m, s Siipnattam pertim-ni DoltUd. C H
 circinans, Raouncou, collactodi nosin¹ stirp cryptog. robertiani

1340. Gytiapora carphosperma *Fries syst. myc.* 2[^].5*3.

AH cfiriiccu Tjji^ aanpsic. SpedmUa hue reposita revtr- de Laeroix misit.



1541. *Phoma albicans* Rob. — *Dcsmaz, Ann. \$c. nat., 5*s^r. tot. XI. p. 284.*
In [XMiiricilis essid;ili3 i.;ichnracearuni, Anlnmno.



1342. Phoma subordinate *Desmax. Ann. sc. nat., 5" sir. -tol- XL p.* ^{284.}
Iu scapo i-mnrLio 1'lmijiiiis tanccolatfi. AuUimuu.

1545. *Sporonema strobilinum* Desmaz, *Ann. sc> nat. "a*sir. *ol* XVIII. p. 368.
Ad squamas simbilurtuu Abiclis dcjctloruni in Vugcsnruui sylvis.

Apud nos raro ad folia Lilacil vulgaris; auhiiiirio; s-tt frquODB cirea M.ignia.....

unde din am. Bowiffh &pcimina cjmia accapinn*.





i:U5. T'eziza Bmarattdma *Le'veilt. Ann. sc. nat. 5' ser. vol. V. p. 232.*

Ad folia pruui **LudUnkae in bortli**, primus, fere loUm* p« iiiiiiui,
observavit in iago H*«(^ eel. riiB«(qui ipeciniria benignu eomHincsvit.

1546. *Silictis Vrkleyana Dur. et Leitl., flo. d'AigcT, tab. 29, /.* 8.

hd cau1« detiidaios Pulnria ilysejucrica; >ar< Hful nus, seJ sal frqutiDS « iliciJg amici

Roussel circa ll<f>liiriiui. Ilycme.

0

1547. Podtsoma fascum *Duty, Bot. gall. p. 881.* — *Corda ico.*
fung. otab. Q f. 92.

Ad romos Junl<ri Sabina: la hcrlii apud nos; accopimus <iw|m exemplaris a *rever. de Lacroix.*

1548. filaeosporiuti Mongeolii *Desmas.* Inn. sc, nal., 5" «4r. **>. XVI. /), 296.
in mtulfi *lhihnok* ad i lolea et folia *Bartsiae* alpinae. Es:ll.





1349. *Croaarium asdepiadeum* Fries *obs. myc.* i". p. 220.

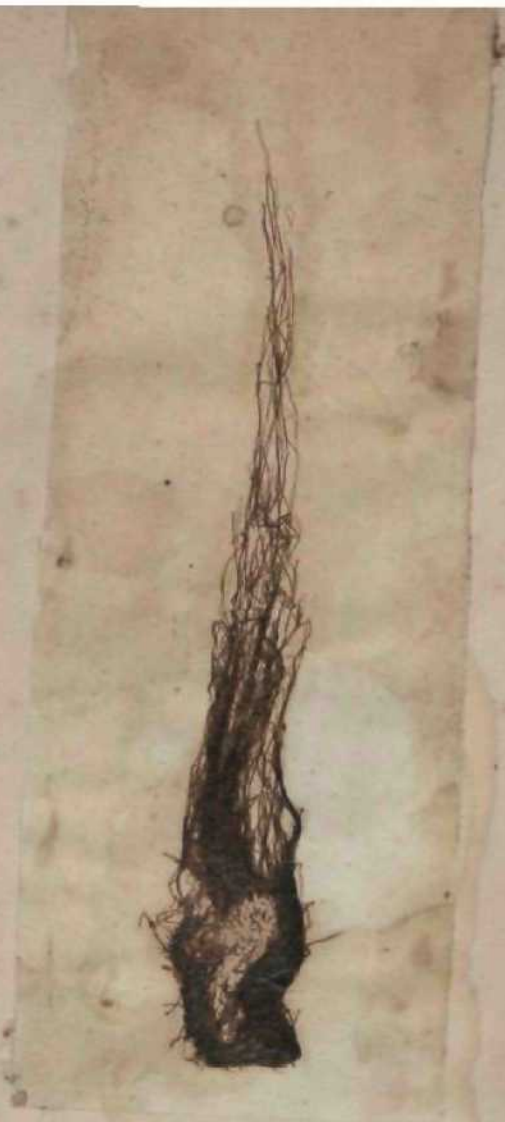
Erinctmi a^leniaUctirn lif>\rf,. /I. fr;a«i? . p. 3*7- CaHMia cronarliie* fink.
in foliis Cjnutchi VIPCCIOlki, AUCMNU.

1350. **Bifipora** moniliorles Corda in Sturm *Deutschl. flor.* !at>. 59.

Moolia amemiato Pert. — *Srtb, Srot. crypt. Fier, lab- 255-*

In l%no Fsigi rwentW Wffifceto ninuc iton sat etaiccaio.





1551. *Phycomyces nitens* Kunze *mycol. Heft. 2, p. 115. lab. 2. f. 9.*

Ulva nitens Agardh,

Ad mbeUuillM olco imbibiEaslñ lucis ntisriiris;

nl) nniic't W *Mantique* DCCCptmU siwriwiina uOSlra. ^

Confer oWnairiones L^iruias I)** *Uemktgtu, Jvurn. tic Clnstitut h° 963, 18S2, <ñ iia4um 01 mo^Alosi*

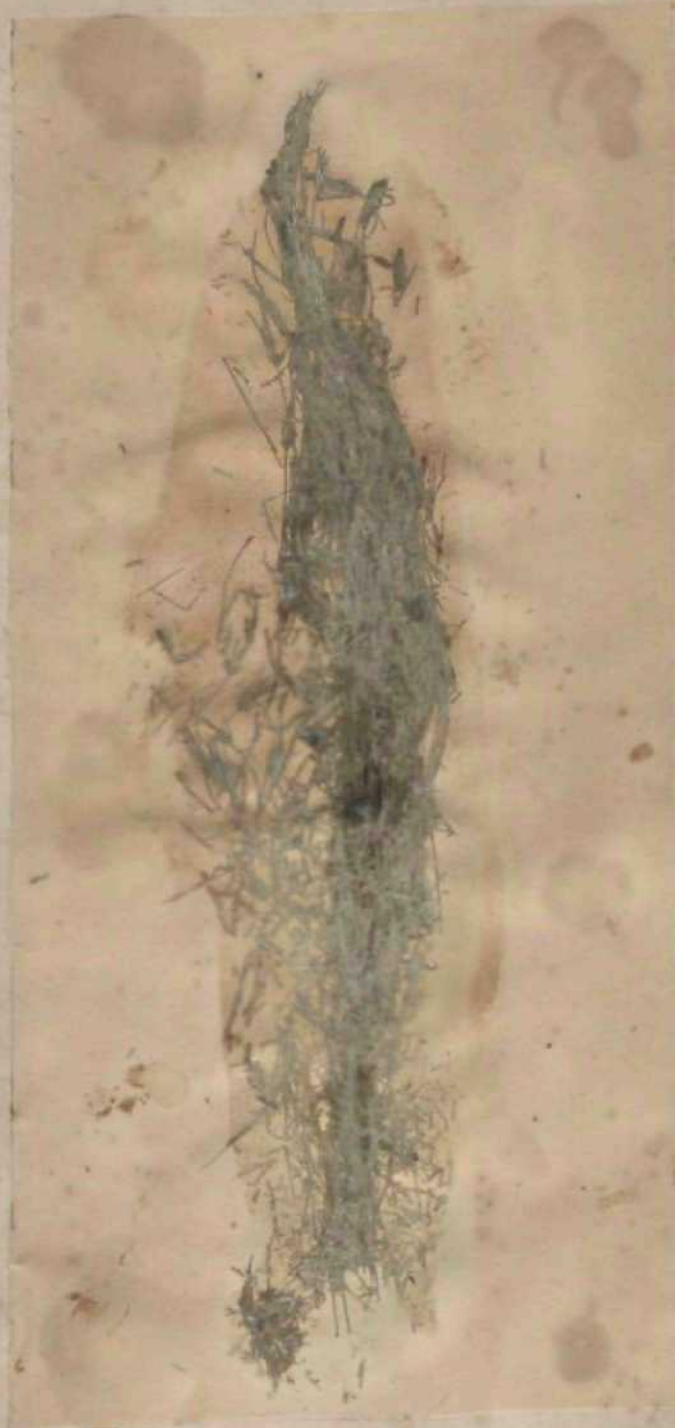
*luju Rjphamyeete**, <tvx low natali *ontfaatio-offidnwai aim*, ^«[«*Jur similtudinem*

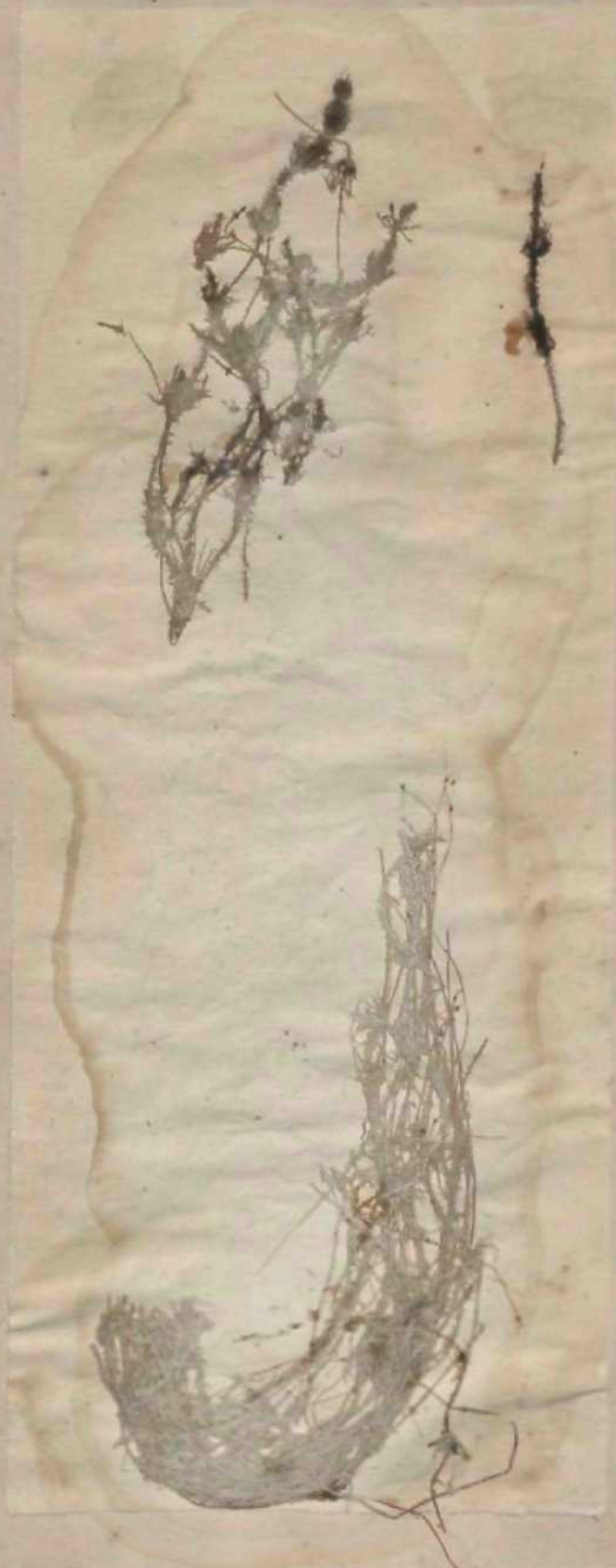
t^urii Cbaetdoaipe Siionini culled, ootlne, (asc, 13, o> 1S-14, tenet.

1552. *Chara strigosa* AL Braun in Kils. Sp. Alg. p. 525.

In Lacu d'&mlitrt* U. tarA **tettegittua** tum am. D" Urek. ^Estate.

Jamjam in fasc. U, u" It77 roll, nosirae **aonoab** spetiakian tiujus speciei incaute
reposita fm:runi cum iis *Charae asperae*.





1555. *Chara hispida* Linn., *Küttd* spec. Mg. p. 524.*

Hjhibl rnm pncatdite iu l*o d'EtaWtru W. Jura ubi <Hin am, £<<* zsUtc lep^{mus}.



1554. *Spirogyra adnata* Kütz. sp. Aig. p. 441.
Conjugata adnata Vawk., *BUI*, wnf., tab. 5. Zygnema uJaalum Agardh.
IB ri™)is Aluli>e el LoliariiRa; ad bptde*. Vere.

1555. *Chantomsia chalybaea* Fries. — *kiitz. Sp. Alg. p. 421.* *erstab. phycos. p. 41.*
Conf. rya ch. nyljaja *Rmh., Cat. bol. 3, tab. 8, f. 5.* *BeOGVna chalybajns Lyngb., tab. <**
In a<uis puris apud nos frccucus promiseie etim thaiiraDiia flenuaimi Vere.



1388 Chantnmsia pygma* «&\$. Sp, Alg. p. 45t 6t Tub. phyc. 4. tab. IW.

4d tapkte csclarcos in rivivilis : legH_w « J ad (wfcta.WpiwiwWi Meluduui »mie<>

Roussel. unde eMmplaria noalrt proveniunt.

«Tab. 5. tab. 48.



1357. *Bulbochste setigera* Agardh. — Kütz. *Sp. Atg.* p. 423
et *Tab. phyc.* 4, lab. 86.

In lacubus, stagnis et fossis ad plantas aquaticas. Estate.



1338. *Oedogonium affim- huts. Sp. AUj. p. 5⁵⁸ el tab.phyc. 5. tab. 40.*
Vewcularia dcsilienii f. fussalt.

In lapidibus irroratis ad ripas Mosellæ circa Romarimontem h. Demangeon observavit.

1558. *Draparnaldia scuta* Kttlz., *Sp. Atg.p.*, *oSGet Tab. phyi.* 3. *tab.* 15.

Uraparnaliin glomiT.iU v. atuta Agar, Dnip. conrcvmdca Bory.

ID fossis siagnisque V'Dgesorum. & suie.





1500. *Draparnaldia pulchella* Kibits. *Sp. Alg.* p. 357 et *Tab. phyc.* 5. tab. 13.
In fuisis el aijujnis Vugtscrum. **L&ate.**



1361. *Stigeoclonium tenae* Kutz. *Sp. Alg. p. 555 et Tab. phyc. 3. tab. 3.*
Drajtarnatdia tenuis Ayardh.

In fossis rivulisque ad herbas aquarias. Estate.



1362. *Ulothrix tenuis* Kütz. *Sp. Alg.* p. 346 et *Tab. phyc.* 2. tab. 89.
In aquis puris per Vogesum. Æstate.



1365. *Clostridium pallidivirens* Kütz. *Sp. Alg.* p. 546 et *Tab. p. 3, tab. 86.*
Conferva brachymelia Lyngh. *Hydrophyt. dan.*, tab. 45. D. ID aqu_s puris. Estate.

1364. *Uloclirium moniliforme* Kütz. *Sp. Alg.* p. 517 et *Tab. pyc. 2. tab. 88.*
In *(otif. frigidis circa Roroariiiofilem Icgil b. Demangeon.*




156*i*. *L. Jioihrix sequalis* ffite. Sp. *Alg. p. 'U7 e/ I«&. phyc 2. tab. 89.*
[1 fossil el ad riffas slagnoruui. Very ad auuuuum.



V

1566. *Euactis calcivora* Al. Braun. in *K'utz, Sp. Alg. p. 542.*
jab.phyc. 2, lab. 78.

In lacu Neocomiensi •bi lapidos wikareos corrodii in iisi[« mcalus verraifofi.its ni^anilriiios ellicit.



1367. Hydrocoleum **caeruleum** Al. *Uraun.* v. *Klitz** *Tab. pfajc.* 2.
p. 24. *tab.* 78. 5.

Cum precedente habitus, ubi pulverem caeruleum colligit eamque in oscillatoria
carbonoplastes *Lyrtg.* aretuum cuiusvis.

1568. Sirostiphon Bouteillei *de Bréb, in De&maz., plant, crypl. exs.*
2^e Wr, n. 140.

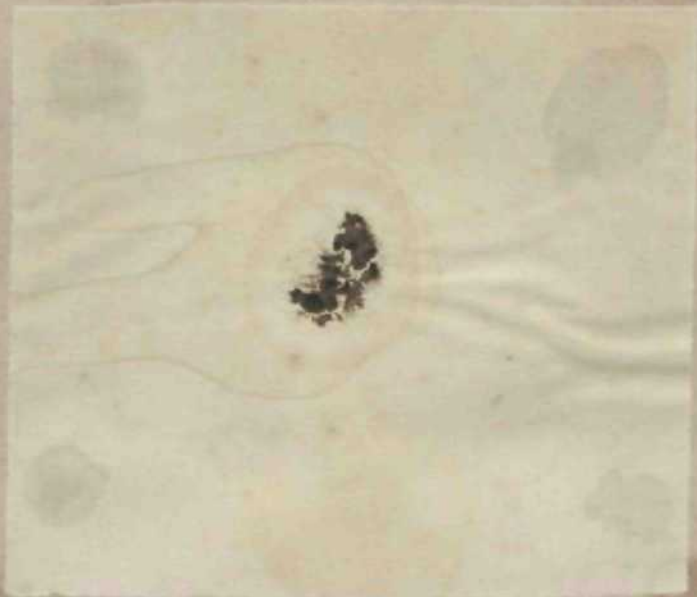
¹ Ad tapides criciaea^ observavil propc Magnincuui el colli-pii am. *Routeitte.*





1569. *Lothrix Brebissoni* Kütz. *Sp. Alg.* 1. 312. *Tab. phyc.* 2. i/b. 50.

Um t;alohrin lauaia *Lnorm*. In stapiis ei fossis Alsaiise. *Lothariigia*; æstate.



1570. *Caioihrix radiosa kits. Sp. Alg. p. "ill et Tat>. }>!<!<' . ± inh. 29.*
Demangeon.

1571. *Scytoaema naians* de lireb. in *Aütz. Sp. Ar'j. p. 506*
et Tab. phy. 8, lab. 23.

In suguis si od hipides immiJaios etm Romiirhoatea. *Estate.*





Nostoc foliaceum Agardh. — Kütz., *Sp. Alg.* p. 217. —
Hassall, *Fr. & Kw. Alg.* tab. 76.
In rupibus et muris inra muscoj Vogesorum.

e

1375. Nostoc Deman^tmii de Brébisson in Lilter.

Ad \$i\i in riviiln tie ta haste -iei Minct dtcto propii Lnytmer. Auiunino,
Granoit; uvais iiiiiee approiUnallt liansverse dispoutis, &peciea nor* ex tie BrWtt on.

1374 *Leptotbra foveolarum*)*IonL Ann. we. nat. \$tr. 7>*| *vol. 12_T p. 287.*

« *parietes in fodinis Margæ diet Magniacum legit et benigne oowmtotrii tn. Bouteille.*

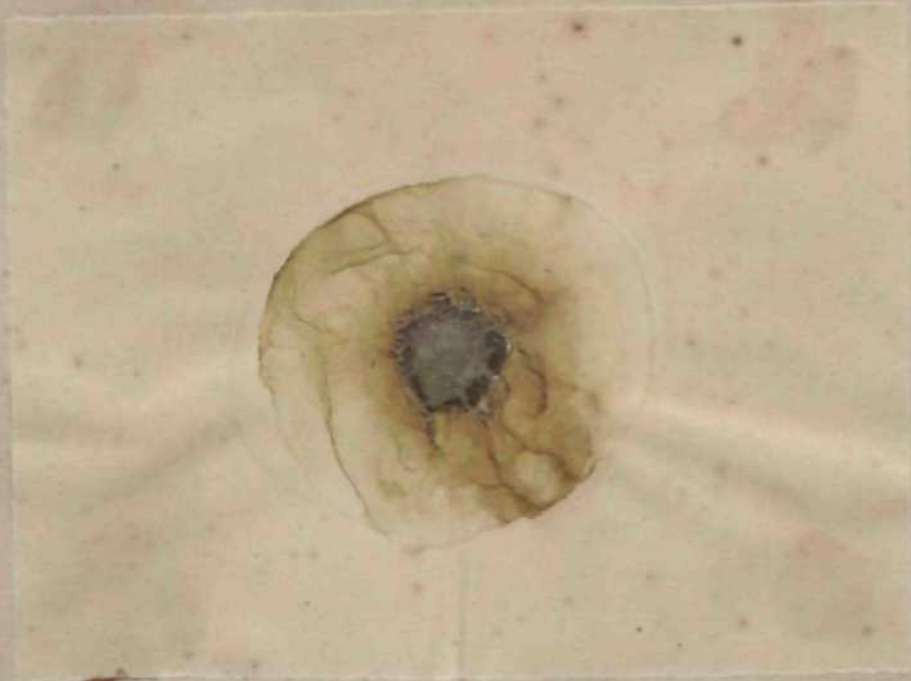
1373. Mionnidium [jannosum *ki'ilz*. *Sp. Alg. p. 256 e/ Tab. phyc. i. lah 48.*
,Osoillaria ppnnriu) *lt<mj*. Ail litnum in Ibssis Viigesoruui. .-Eslate.



1376. *Gscillaria tennis* var. *iormosa* hülz. *Sp. Alg.* p. 242
et *Tab. phyr, I, tab. 41.*

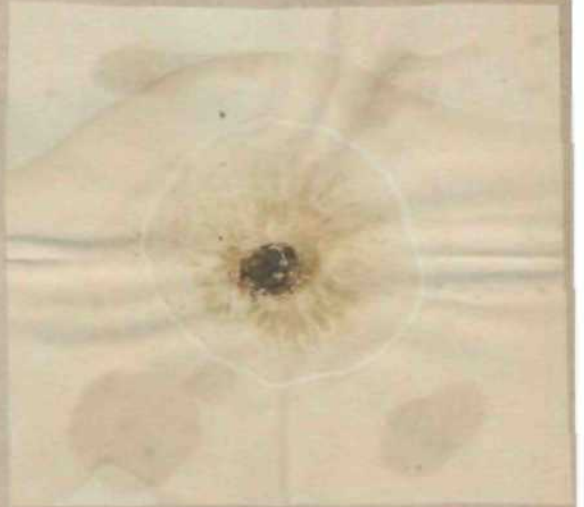
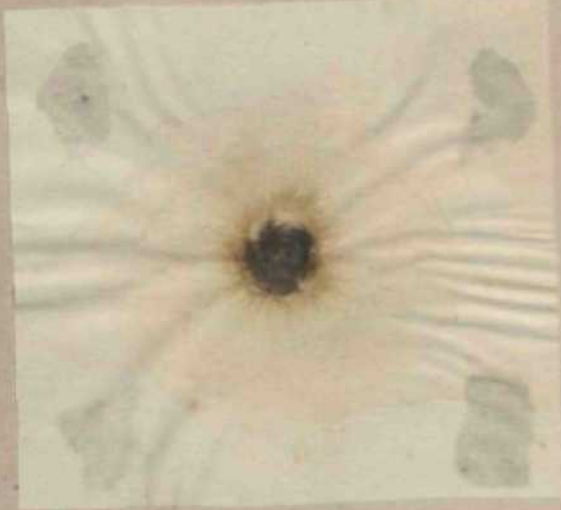
lu fassis el sia^nu Vogesoi uin. Eteiupliria liic ivjuisiLi uitida pamil b. Daiuuigeen.





1577. *Oscillaria umoaensis* rar. *umcinata* Kilt*, sp. Atg. p. 245
el Tab. pAga 1, lab. 41.

in atniis Btagnaiiilnis adhnren* an use <! ^isi- pai PogeHitn. A:-JAI<.

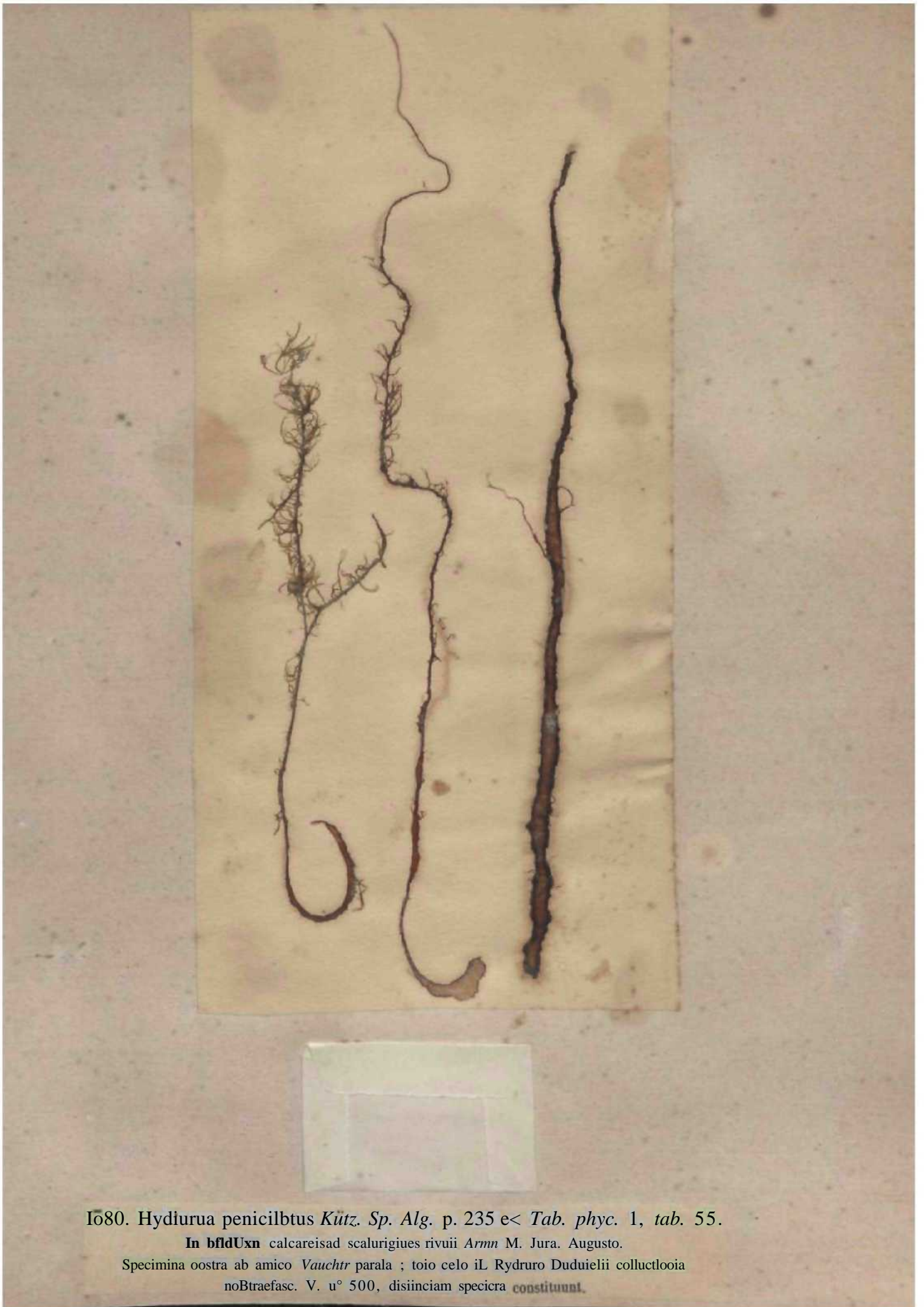


175 Oscill. Haalinou rar. allochroa KiUz. Sp. Alg. p. 244.
In Umit *A heriiM NaMttb iMeHntilnti noubilis, aeciindum b, Dtmangeon.

1379. *Oscillaria limosa* var. *chalybaea* Kütz. *Sp. Alg.* p. 214
el *Tab. phye.* I, tab. M).

Ucrbts iiviiivunicin el ad linum in fastis obscrvii b. *Demattgetm,*





1080. *Hydurua penicillatus* Kütz. *Sp. Alg.* p. 235 e< *Tab. phyc.* 1, *tab.* 55.

In bflUxn calcareisad scalarigiues rivuii Armn M. Jura. Augusto.

Specimina ostra ab amico Vauchtr parala ; toio celo iL Rydruro Duduielii collectioia
noBraefasc. V. u° 500, disiinciam specicra constituunt.



1581. *Paltnogloea* BreLissorti **ffite**. *Sp. Atg. p. 221 el Tab. pkyc. i,tab. W.*

Oiini Palnielta cylisdrospora *dt Urchin, in Lilt.*

loin m f M a (TUIUIU to pralis turfaceis cinia Bruycrium, promiseue cum filameniis **Leptotfertcb**
glocophila *h'uiz.* et iygogoDii ericcioruiii, massant gebiiuusam cflidens. Autumou.

1582. *Gtoeoeapsa Peniocystis h'iifz. Sp. A(g. p. 225 et Tab. phyc 1, lab. 36.*

Peuiocyblift purpurca tic Brebis.*

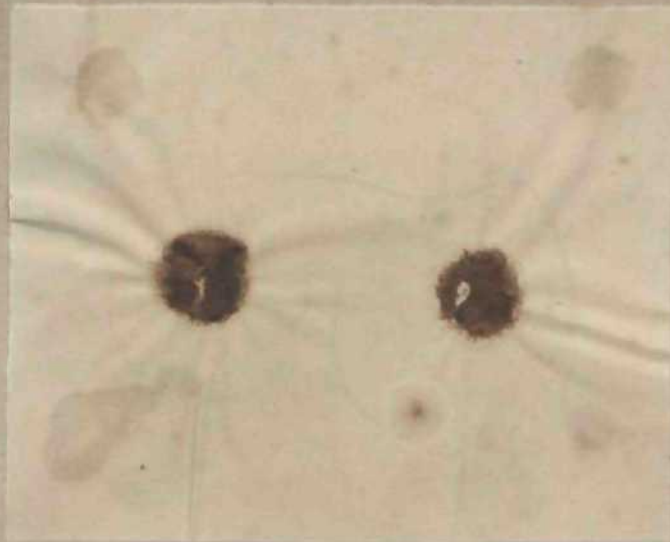
la muEcosi} ttimidis iraLait. Esemplaria uostra Itgit sm. J?ow«' circa lielodutmm.

1385. *Hyalotheca mucosa* Ehrenb. — Kütz. *Sp. Alg.* p. 187.

Desmidium mucosum de Bréb. *Alg. Fal.*, p. 63, tab. 2.

In fossis pratorum torfaceorum, æstate per Vogesum.





1584. *Cosinarium Meneghini* de lireb. in Raifs brit. Desmxtt.
p. 96. tab. 15. f. 6.

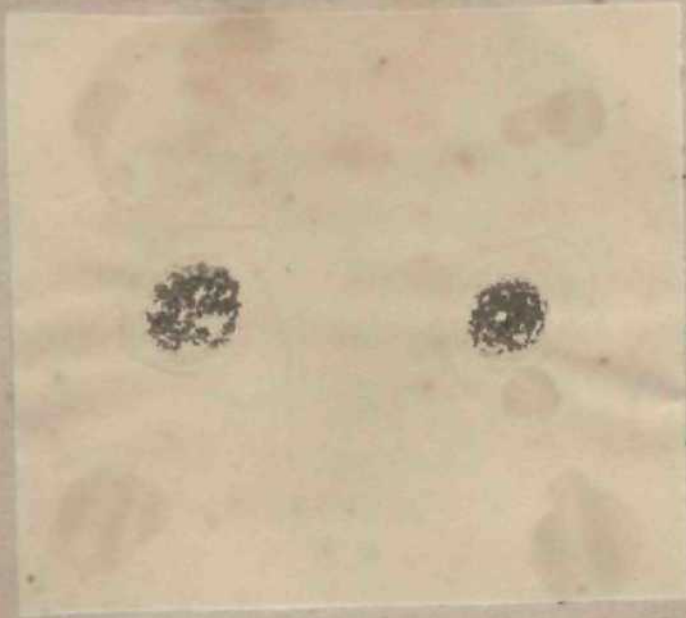
In WAHMNM tquoti ptaiuatvcn r.triarfst per aliquot menses asservatarum
observavimus, deiode pamvii unsira cxemplaHa 6. Demangeon.



1385. Cosiiarium let raoph thai tit urn *K'utz. Sp. Alg. p. t75.*

Rat ft hric. Vtimid., p. B8, fa. 11, l'. 2,*

Pilum eat in iu(iisioit aijuosa, cum prxcedenle.



1580. *Euastrum crassum* Kütz, *Sp. Alg*, p. 172.
Malft trii. Drtrni. . JI. Ht. tat. U, f. 3. In aquis siapnantibus, promiscue
cmm aim Eantti Cmmaiifjue speciebus.



1587. Euastrum insigne Hass. in Ralfs *hrit* *D e m i d* *P* . 85. tab. 13, f. 6.
In aquis stagnantibus **dna** toeira **StepMk** Yogesaruni, proiniscue cu
pluribus al *estate.*
iU Dciiuidicis ,

1388. *Micrasterias oscitans liaifs brit. Desmid. p. 76. tab. 10. f. "2.*
tu Yugesorum aquis stagnantibus.

Proquans promiscue cum Fuzisve Integm

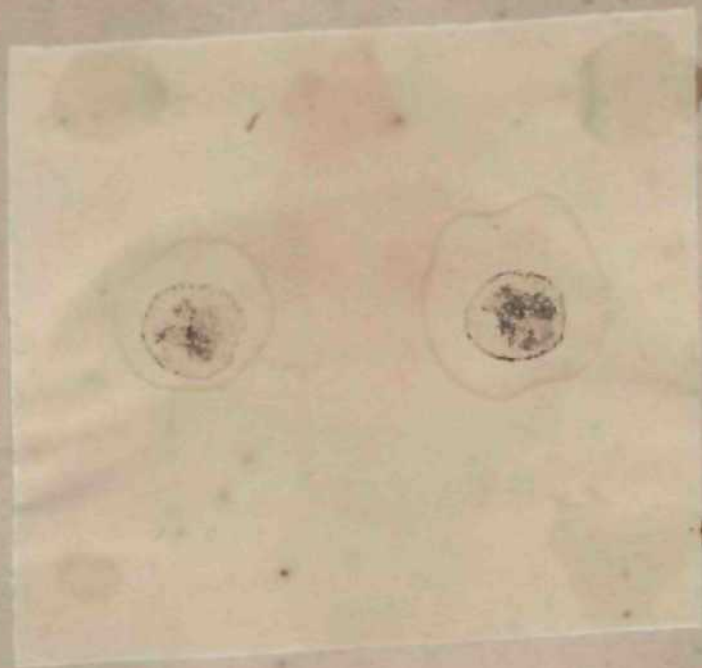


1711. *Puccinia DigUus Ehrenb.* in *lialfs briL Desmid.* p. ISO. tai. 2D / 3
In aua st;igiante lorfaceoruni in Vogeso. *E*-late.






1590. *Utricularia Brebissoni* Ralfs *brit. Desmid.*, p. 155.
Cylindrocapsa Brebissoni Harelet *brit. Fwfaat., Alg. tab. 92*, / 17.
In a (iiiis *Vogosonml* siaguaniiiiis. *Æstate.*



1591. *Closterium didymotocum* Cord. Ralfs brit. Desmid. p. 169.
tab. 28. f. 7. a. b.
In fossis turfosis per Vogesum.



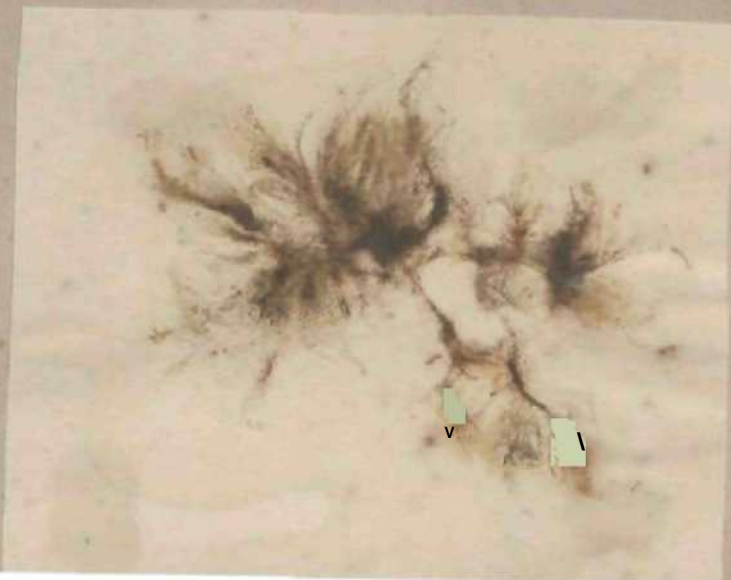


1592 **Uostarian** didymotocum ror, liaillyaoum *Ratfs. brit. Desmid. p. 169.*

tab. 28. / . 7. c. d.

U fosis *turfosis.*

1395. *Uptomitos lacteua* K'tUz. *Sp. Alg. p. 155.*
Owferra laeiea HiAh. In i-jvulis til fessis Queniibus pur annum.





1394. *Ceratoneis* AnsjJKtto. 8p. *Alg*, p, 89 et *Bacill.* 1. tab, 6. l'. iO.

Navicula Arcus Eir^nft. ID rif ulb Vogaonin fngklii. *Estate.*



1306. Achuanthes uuuuli^ima £ M/;. Sp. ^ty. p. 34 e* J9a«7/. fafe. 13. /'. 2.
Parasitica J Scylonfi bMKfenva ? In lapillis tacus Aonj/rmrr. Tote anno.



1506. *Fragilaria capucina* Kütz. *Sp. Alg. p. U et Bacill. tab. 16. f. 3.*
NemaioptaU eaputiJifl Bory. Ubique in sla^nis el aquis qwiciis.





\7Afi, **FragilarJa** viresceus /ia//> in *Kuts. Sp. Alg. p. 14.*
Promiscue com pr&V<i>M et variJi t>ia)ioieii oisrcvayji li-piii)ut' ft. Demangeon.

*





158. 8. Odonttdimu **mesodoo** *Kulz. Sp. Atg. p. 12 et Baeill. tab. 17. f. 1.*
Fragilaria tuaaAatx Ehrmb. !' scalurigiuibus frigid is rirca Ru mar! mou tern nlisorvavit 6. Demangeon.



1549. Meridiem eirvulare Agardh. — Kütz. Sp. Aly. p. II).

Echinella irrotam Ciw. SMK. crypf. Ft. 1, (ab, 33.

Involvens herbas aquaticas to fossis promistuc cum Syindra Ulna.



I Mm Mmi.ihtMliuin peetmfc Kits. Sp. Alg. p. V et Bacill. lab. Iti f. 11
CunJerr* petl/nXts Pifte..Fruplrui pectiw&i Ratst,
lit fOisie OoeDlibu foobilbasqag rirca ftonfirimonicro Icpi *. Demangeon.

INDIAN BOTANIC GARDEN LIBRARY
BOTANICAL SURVEY OF INDIA

+

